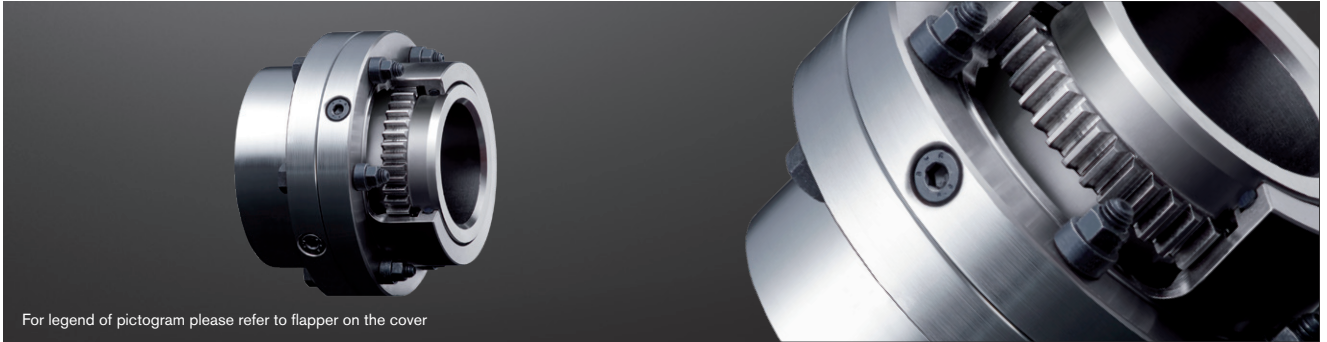


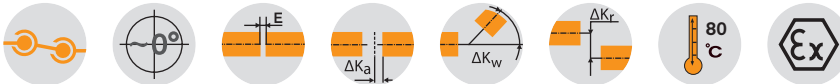
GEARex® FA, FB and FAB

All-steel gear couplings

Coupling in accordance with AGMA 9008-B00, high power density



For legend of pictogram please refer to flapper on the cover



Dimensions																	
Size	Pilot bore	Max. finish bore		Dimensions [mm]													
		d ₁ , d ₂	l ₁ , l ₂	Hub lengthened max. l ₁ , l ₂ ²⁾	E _{FA}	E _{FB}	E _{FAB}	L _{FA}	L _{FB}	L _{FAB}	L ₃	D	DA ₁	DA ₂	F ¹⁾	d ₃ ¹⁾	
10	26	50	43	105	3	21	12	89	107	98	55	67	111	83	74	52	
15	26	64	50	115	3	15	9	103	115	109	59	87	142	106	84	68	
20	31	80	62	130	3	31	17	127	155	141	79	108	174	129	104	85	
25	38	98	76	150	5	29	17	157	181	169	93	130	213	157	123	110	
30	44.5	112	90	170	5	33	19	185	213	199	109	153	240	181	148	130	
35	46	133	105	185	6	40	23	216	250	233	128	180	280	213	172	150	
40	52	158	120	215	6	42	24	246	282	264	144	214	318	249	192	175	
45	80	172	135	245	8	50	29	278	320	299	164	233	347	273	216	190	
50	80	192	150	295	8	56	32	308	356	332	182	260	390	308	241	220	
55	90	210	175	300	8	70	39	358	420	389	214	283	425.5	333	275	250	
60	100	232	190	305	8	84	46	388	464	426	236	312	457	364.5	316	265	
70	100	276	220	310	10	76	43	450	516	483	263	371	527	424	360	300	

Technical data											
Size	Torque [Nm] ³⁾		Max. speed [rpm]	Weight with max. bore [kg]			Mass moment of inertia with max. bore [kgm ²]	Dowel screw (10.9)			
	T _{KN}	T _{KN} (42CrMo4)		Sleeve	Hub	Total		z	M	T _A [Nm]	
10	930	1580	8500	0.75	0.55	2.75	0.004	6	M6	15	
15	2000	3300	6400	1.50	1.10	5.60	0.015	8	M8	36	
20	3500	6300	5400	2.40	2.10	9.50	0.037	6	M10	72	
25	6500	11000	4500	4.30	3.60	16.60	0.096	6	M12	125	
30	10000	17400	4000	5.70	6.20	25.00	0.178	8	M12	125	
35	17000	28800	3500	9.50	9.90	40.90	0.410	8	M14	200	
40	28500	48500	3100	11.60	16.00	57.50	0.746	8	M14	200	
45	37000	62000	3000	15.40	21.40	76.40	1.163	10	M14	200	
50	51000	86000	2500	25.30	29.50	113.50	2.229	8	M18	430	
55	65000	110000	2300	31.00	40.20	149.00	3.415	14	M18	430	
60	85000	145000	2100	32.10	52.80	175.70	4.514	14	M18	430	
70	135000	240000	1850	42.50	85.50	265.50	9.212	16	M20	610	

■ = Standard

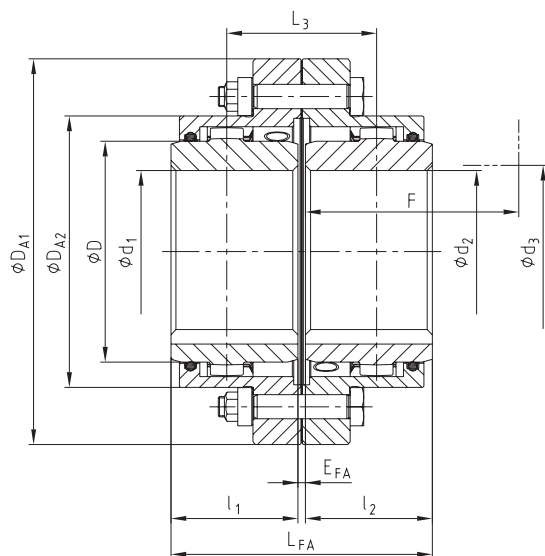
¹⁾ Space required to align the coupling and replace the gasket

²⁾ Lengthened hubs available as a standard for type FA only. For type FB and FAB lengthened hubs are available on request only.

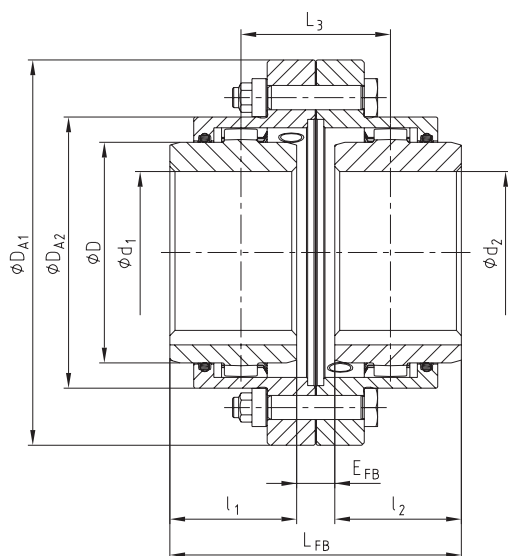
³⁾ Maximum torque of the coupling T_{K max} = rated torque of the coupling T_{KN} x 2. For selection see page 14 et seqq.

Ordering example:	GEARex® FA 10	d ₁ Ø50	d ₂ Ø50
	Type and size of coupling	Finish bore with keyway to DIN 6885 sheet 1	Finish bore with keyway to DIN 6885 sheet 1

Type FA



Type FB



Type FAB

